



**ULYSSES**

Pioneering the future of ocean health

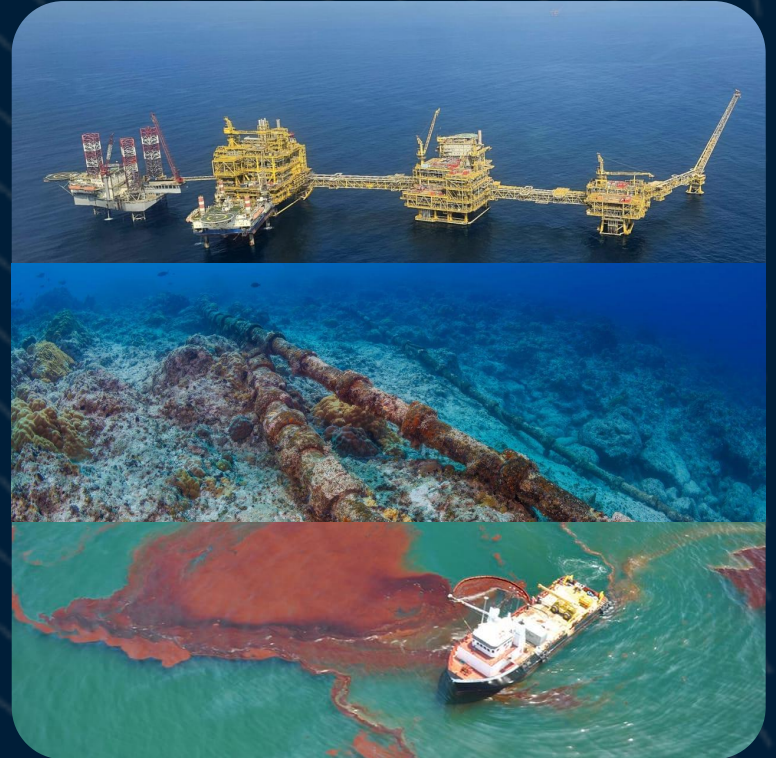
*October 2025*

# Economic activity at sea is increasing fast

Offshore energy and communications infrastructure are expanding rapidly and fisheries are overused.

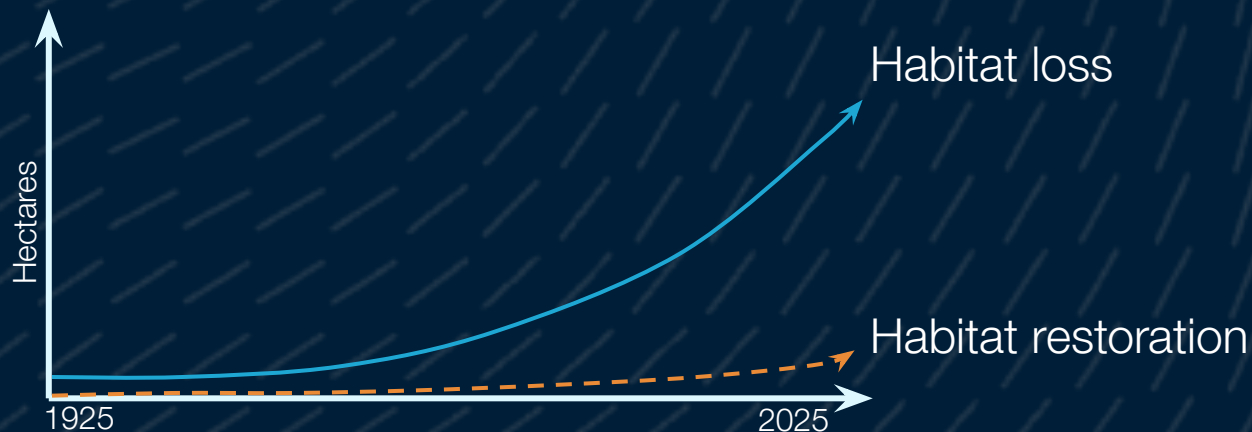
Ever-expanding infrastructure must be inspected or repaired at least annually, driving up costs and damaging seabeds.

As the ocean economy grows, so does ecosystem damage, affecting fisheries, weather, and human health.





# Current ocean health is in steep decline



Marine habitat restoration remains expensive and labor-intensive, so projects can't reach meaningful scales.

But the loss of critical productive ecosystems is accelerating.

This trajectory cannot continue.



Effective solutions are needed now more than ever.

Tightening regulations demand proof of environmental protection.

Faster ecosystem change makes early detection and intervention critical.

Economic activity at sea will continue to drive habitat loss.



We've cracked the cost, autonomy, and scale puzzles.

Ulysses builds **customized systems** for observation and restoration through a package of **self-directed, autonomous vehicles**.



Our systems keep boats, divers, and expensive ROVs out of the water, detecting stressors and creating functional balance at **ecosystem scales**.

# Persistent diagnosis and treatment abilities.

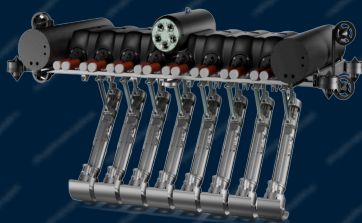
## MAKO NARROW-BODY

Launched Q2 2025



## MAKO HEAVY-LIFT

Launched Q4 2024



## LEVIATHAN

Launching Q4 2026



Weight	Payload	Speed	Energy
80kg	70kg	6kt surge	11kWh

Weight	Payload	Speed	Energy
3500kg	500kg	20kt surge	8MWh

Custom ground truthing  
High-resolution mapping  
AI-assisted identification

Seagrass seed collection  
Seagrass seed planting

Recovery of Mako AUVs  
Wireless AUV charging  
AUV transportation

### Read-and-write capabilities...

Gather and process data from the ocean

Intervene and make real, physical changes in the marine environment

### Wide operational amplitude...



1200nm Operational range



6 months Persistence



300m Max Depth



# Ulysses unites surface & underwater vehicles into one autonomous system.

STARLINK

## AI-powered mission control

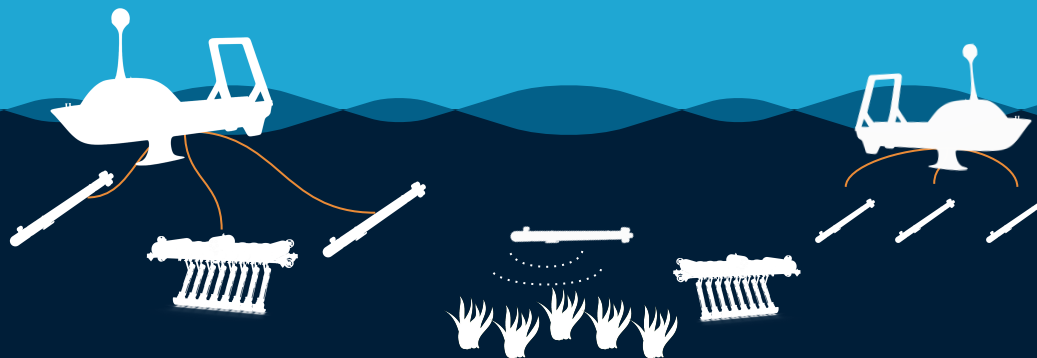
On Device Edge AI enables local decision making for truly hands-off operation.

## Months-long, mothership-enabled deployments

Surface vehicles with automated docking enables long periods of persistent dual-domain operations.

## A subsea fleet

Perform automated underwater tasks 72h at a time, up to 150 nm from mothership, up to 300m deep.





We are working with some of the world's top ocean stewards across Australia and the United States.



GOVERNMENT OF  
WESTERN AUSTRALIA



THE UNIVERSITY OF  
WESTERN  
AUSTRALIA



Great Barrier  
Reef Foundation



Central Queensland  
UNIVERSITY



WESTPORT



WESTERN AUSTRALIAN  
MARINE SCIENCE  
INSTITUTION

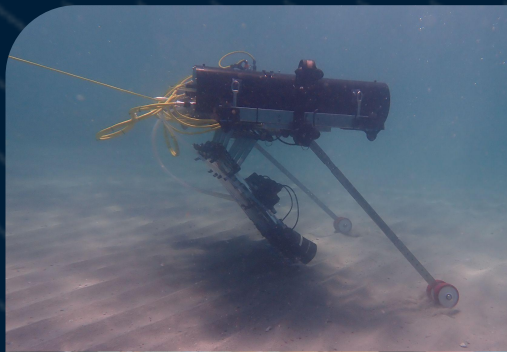


The Nature  
Conservancy





# Ulysses in Western Australia





# Thank you.

INTRODUCTORY DECK

WILL@ULYSSES.ECO

NATE@ULYSSES.ECO