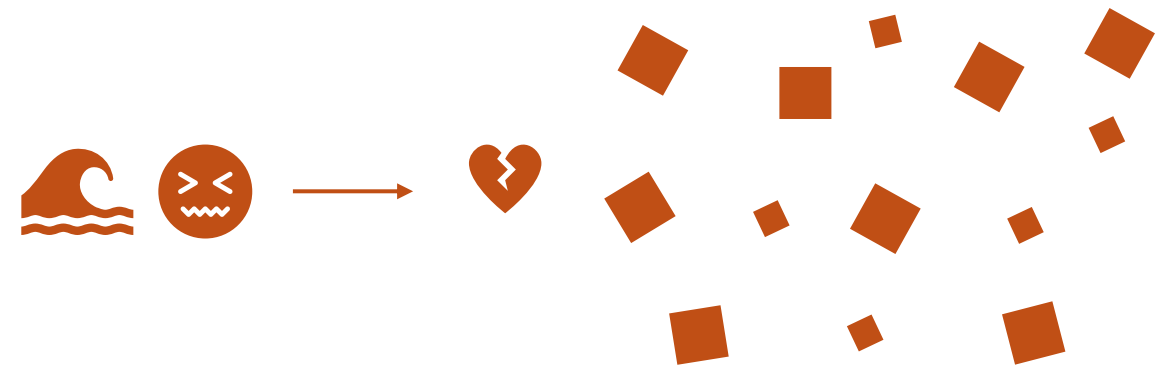




MALO  
E'LELE!

# SCOPE

- **Organization:** Ohonua Community
- **Location :** **Red zone areas** – Affected by the 2022 tsunami, the site is located in Ohonua village on 'Eua Island, Tonga. Facing directly toward the sea, it has remained unused since the disaster.
- **Problem:** After the tsunami, the **Ohonua community** experienced significant **disconnection**, leading many locals to **lose their sense of belonging** to the place they call home. **Abandoned areas** remain underutilized, further **reinforcing this disconnection**.
- **Question:** “What approaches can repurpose and revitalize ‘red zone’ areas to serve as assets for cultural, social, and environmental regeneration?”



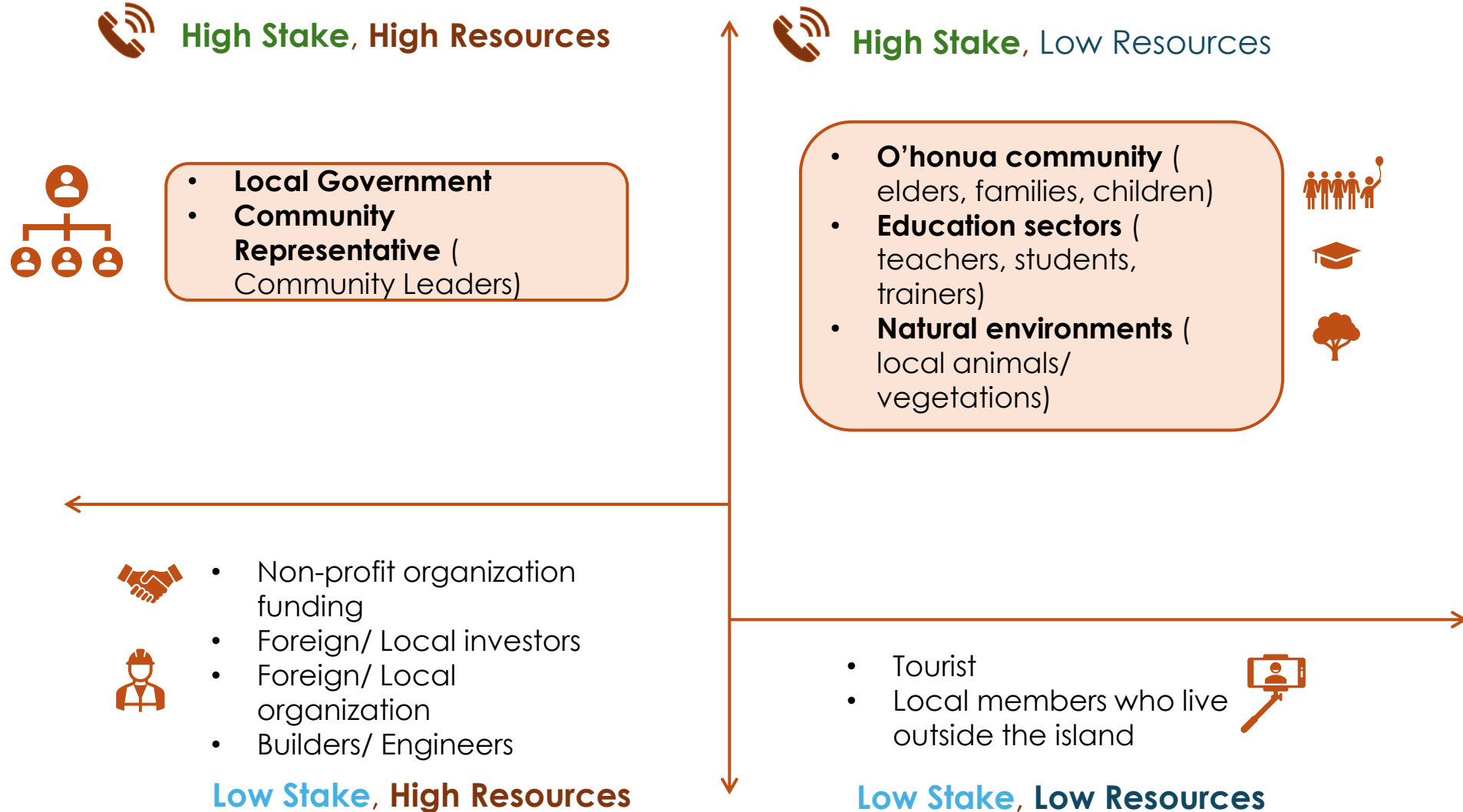


**Ohonua Map** – credited to Shiyi Zhang, a team member of the 'Ohonua Playground Project.





# USERS



# PROPOSAL

*“The project proposes a native park with an integrated cultural hub and children’s playground along the tsunami-affected Red Zone shoreline of Ohonua, Eua, Tonga. It responds to the lack of safe play spaces while creating opportunities for cultural exchange, storytelling, and knowledge-sharing”*

# VISION BOARD

## START HERE

### FOR PAST EUA COMMUNITY

- COMMUNITY MOURNING CEREMONIES
- FORGIVENESS PRACTICES
- HELPING EACH OTHERS
- DOING NOSTALGIC ACTIVITIES

### FOR PRESENT EUA COMMUNITY...

- SHORELINE RESTORATION PROJECTS
- FOCUSING ON REVITALISING LOCAL NATURE
- CREATING REGULAR SELF-CARE RITUALS
- CULTURAL REVITALISATION ACTIVITIES

## PLANNING FOR EUA'S FUTURE : YEAR OF GROWTH



A COZY, SUSTAINABLE HAVEN, BLENDING DESIGN WITH ECO-FRIENDLY PRACTICES, CREATING A SANCTUARY THAT REFLECTS COMMUNITY VALUES AND COMFORTS.

### Support Small, Everyday Resilience Actions

- BE ACTIVELY ENGAGED IN COMMUNITY.
- ADVOCATE FOR SOCIAL JUSTICE ISSUES.
- PASSING DOWN LOCAL KNOWLEDGE IN DAILY LIFE

### Relationships

FOSTERING DEEP, MEANINGFUL CONNECTIONS, MY RELATIONSHIPS WILL BE ROOTED IN TRUST, MUTUAL RESPECT, AND THE JOY OF SHARED EXPERIENCES.



### Health



PROMOTING OUTDOOR ACTIVITIES AND SPORT

### Sustainable Tourism

USE TOURISM TO STRENGTHEN CULTURAL PRIDE AND ENVIRONMENTAL STEWARDSHIP, NOT TO REPLACE TRADITIONAL LIVELIHOODS LIKE FISHING, AGRICULTURE, OR LOCAL MARKETS.



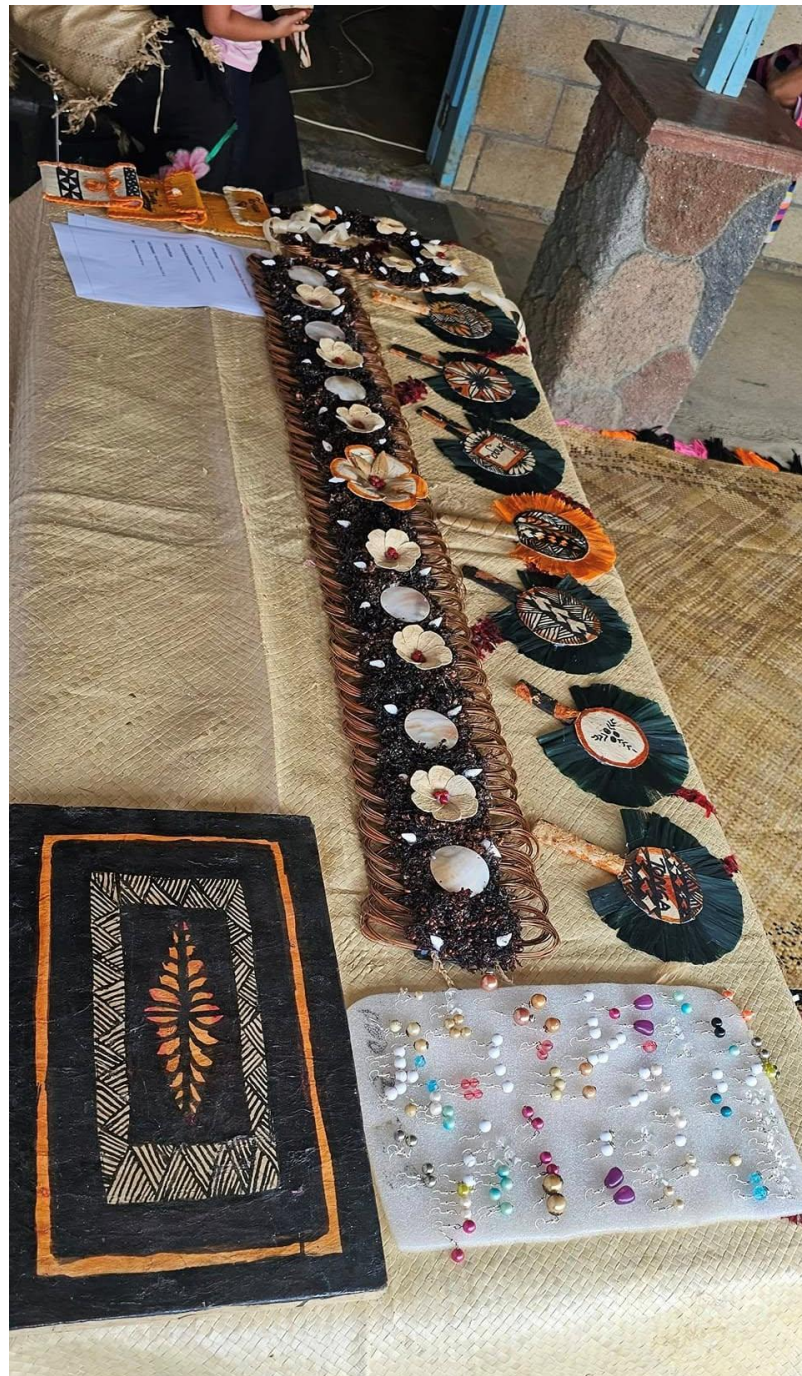
### Personal

LEARN, EVOLVE, AND EMBRACE NEW CHALLENGES!



# NATURE-BASED SOLUTION

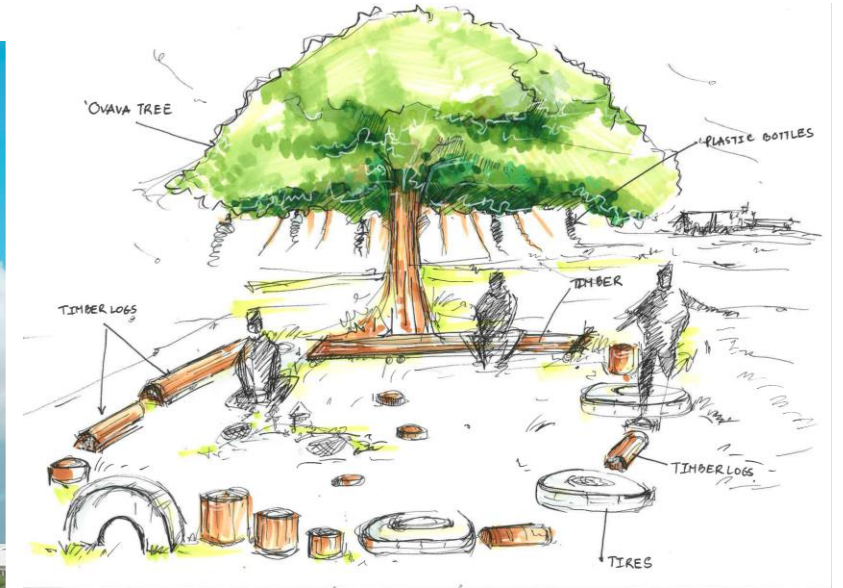
- **Ecological Restoration** : Planting native coastal species mangroves, 'Ovava trees, vetiver — to stabilize soil, slow erosion, and regenerate biodiversity.
- **Cultural hub**: Lightweight shelters, shaded tree groves, children's playgrounds, and open areas for traditional storytelling, Lakalaka dance
- **Tactical placemaking**: Using recycled tyres, bottles, and coconut leaves as play and seating structures keeps the design low-cost and rooted in local creativity.
- **Community governance**: Women's groups, children's groups and block associations coordinate care, ensuring stewardship and collective resilience.

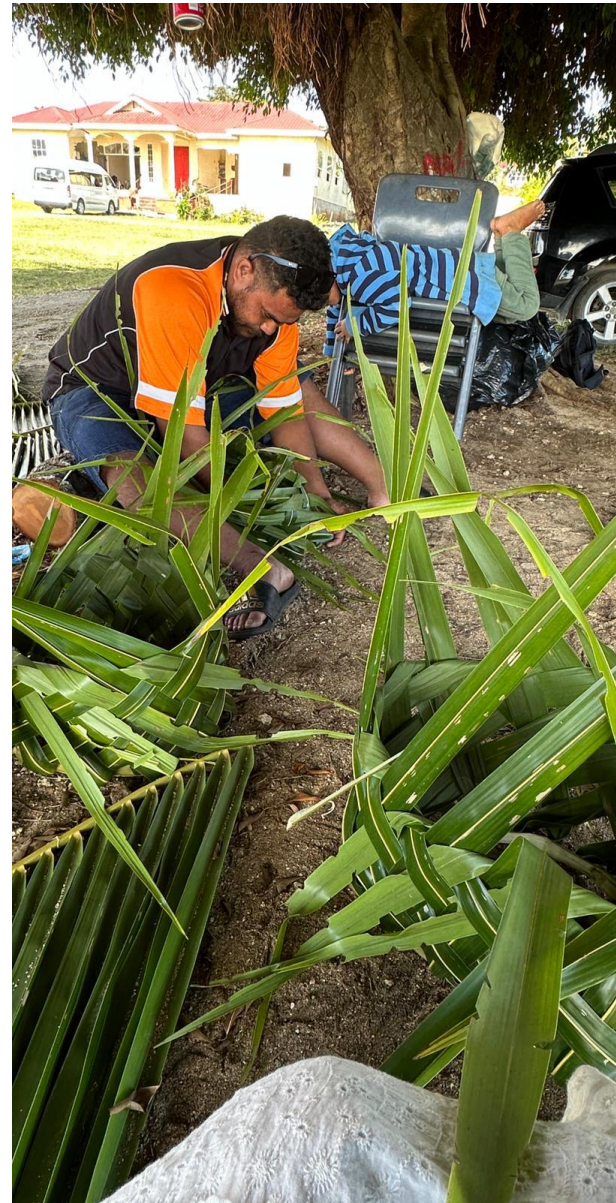
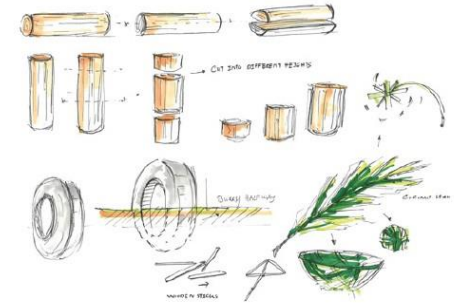
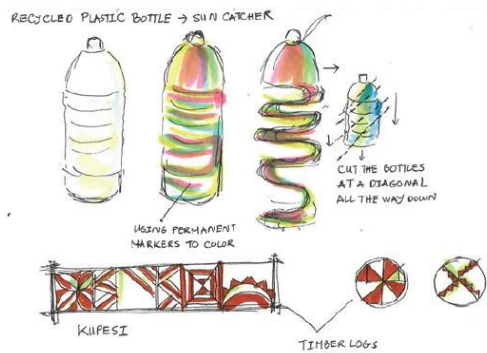
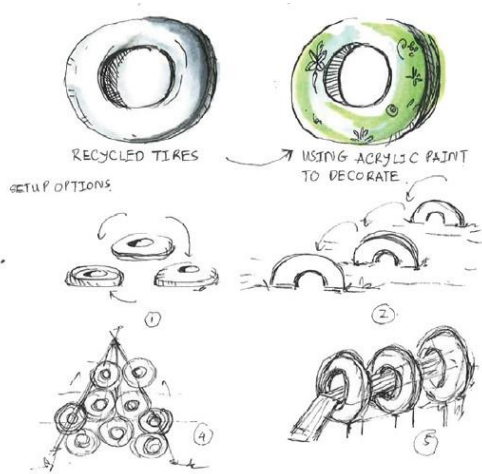


Source : EUA11 Facebook Page



# Pivot Project – The Ovava Playground







## BENEFICIARIES

- **Local residents of ‘Ohonua’s seven blocks:** Families from ‘Ohonua’s seven blocks, including women’s groups, elders, and children who will directly use and care for the space.
- **Youth and schools:** Students engaged through programs that teach cultural identity, environmental stewardship, recycling, and placemaking.
- **Visitors and future generations:** People who will experience a safer, greener, and more resilient shoreline that celebrates Eua’s culture and nature.

# References for Recycled Playground



## Guatemala Playground

*A recycled playground to look like a giant T-Rex. The children even came up with the design themselves*



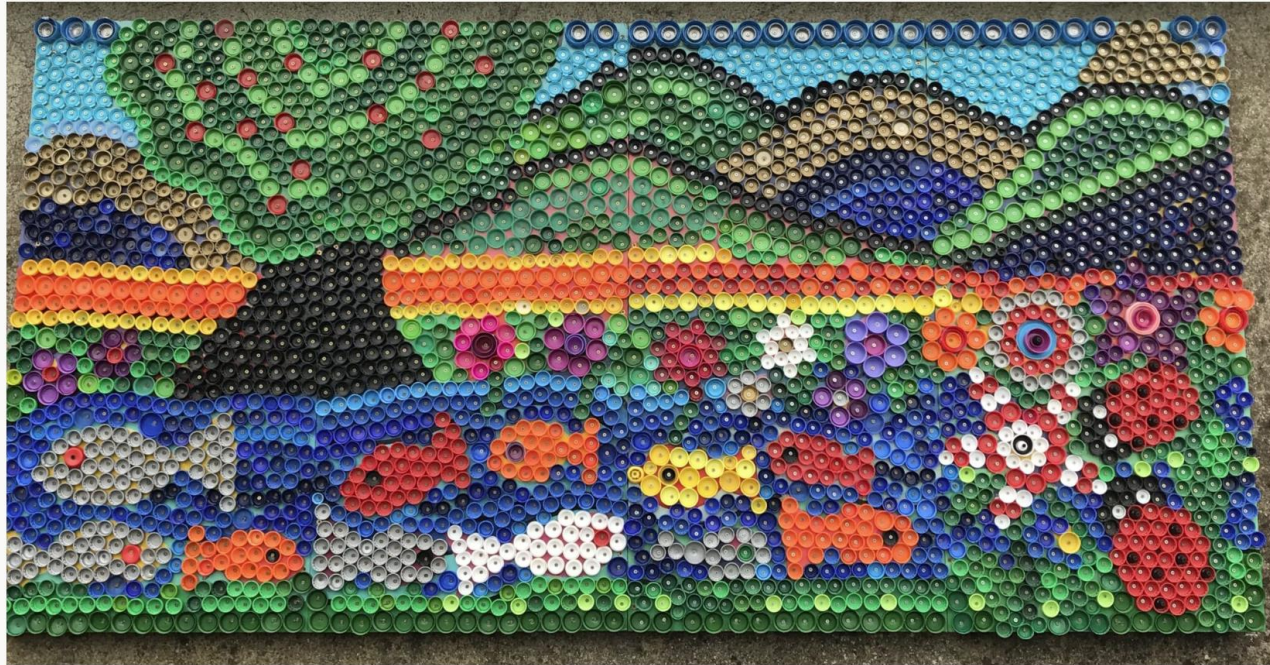
## G.B. ENGLAND. London. Dalston.

*Playground. G.B. England. London. Evergreen Adventure Playground Dalston. 2008*



## Basurama Temporary Amusement Park Lima (Peru) 2010

**The project implementation involved active self-construction using reused materials, as well as collaboration with local residents and various artists to design the temporary amusement park**



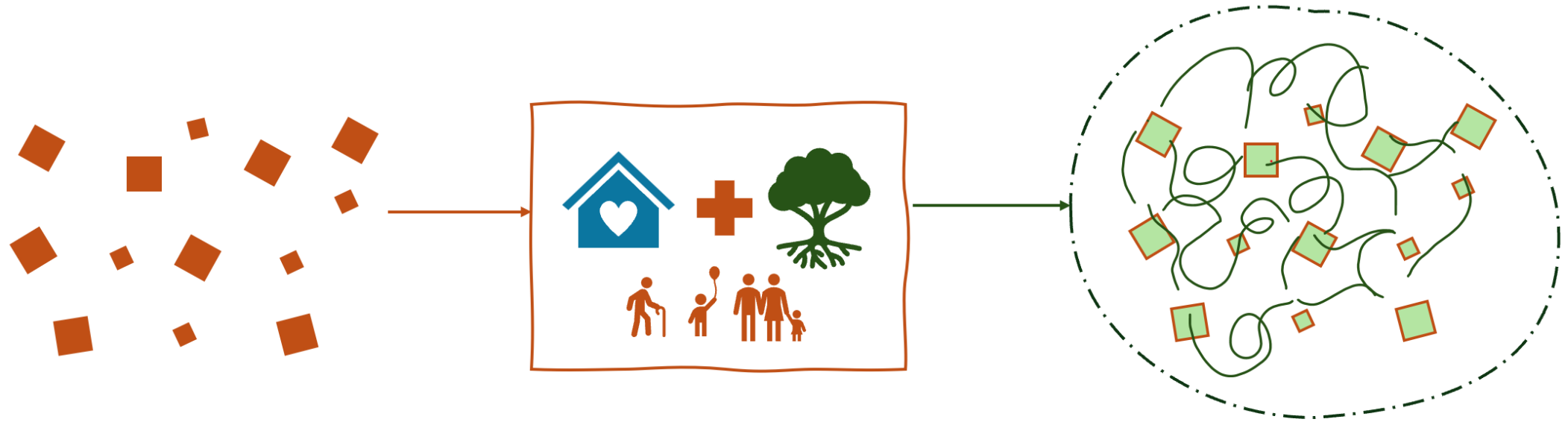
### Recycled Plastic Bottle Caps Mural

Source: <https://ecoevolution.ie/the-message-behind-the-6000-plastic-bottle-cap-mural/>





# SUPPORTED REQUESTS



- **Funding:** To cover the costs of planting coastal native species (mangroves, 'Ovava trees, vetiver) for shoreline protection, building lightweight gathering spaces from local and natural materials
- **Partners:** NGOs, research institutes, and local government to provide technical expertise in ecology, planning, and disaster resilience, while also **supporting bottom-up community initiatives**
- **Visibility:** Support to share Eua's story widely as a Pacific-led model of recovery, resilience, and care for Country, with the goal of inspiring replication in other island communities facing similar Red Zone challenges.
- **Stewardship Support:** Training for women's groups, schools, and youth leaders to take long-term care of the park

**MALO APUTO**

