

An aerial photograph of a road intersection. In the background, there are several pieces of construction equipment, including excavators and trucks, parked on a dirt area. The road has white lane markings and a crosswalk. A large, stylized graphic element consisting of a blue and black diagonal shape is overlaid on the right side of the image.

Enhancing Private Sector Participation in Pacific Infrastructure

Realising the Private Sector Investment Principle of the Pacific Quality Infrastructure Principles

Koustubh (Kossi) Chandorikar
Group Business Development Manager
Kramer Asia Pacific

Quality Infrastructure for The Pacific

Aim: Lift the quality of regional infrastructure in line with Pacific-identified priorities and the 2050 Strategy for the Blue Pacific Continent.

- Infrastructure for the Pacific, by the Pacific.
- Infrastructure is the foundation of connectivity, resilience, and opportunity.
- PQI Principles call for local participation, inclusion, and sustainability.
- Development partners are essential to enabling this transformation.

Challenges for Local Firms

Limited access to development-funded projects

Complex and restrictive procurement systems

Limited financial capacity and visibility

One-off (or short-term) rather than sustained capacity building

Need for stronger engagement and partnership models

Kramer Asia Pacific's Experience

Over 45 years delivering infrastructure across the Pacific

Expertise: Civil, structural, marine, transport, renewables, and social infrastructure

Partnerships with local/international firms for design, delivery, and mentoring

Focus on sustainability, climate adaptation, and community outcomes

Example Projects:

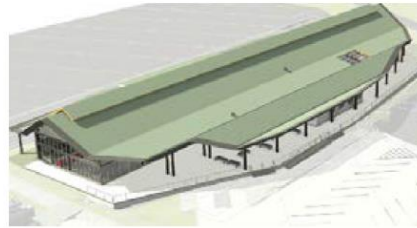
- Transport and aviation upgrades
- Renewable energy integration
- Climate adaptation initiatives

Munda International Airport

MUNDA, SOLOMON ISLANDS

Responsibilities

Construction Supervision | Architectural Services | Interior Design | Aviation | Civil | Structural | Building Services



In a remarkable achievement, the Solomon Islands Ministry of Communication and Aviation proudly awarded the prestigious Design and Construct contract to the renowned China Civil Engineering Construction Corporation. Joined by Kramer Asia Pacific and Netherlands Airport Consultants, this extraordinary collaboration redefined the landscape of aviation excellence.

Set against the backdrop of the captivating Munda settlement, the new terminal building rose majestically, seamlessly blending with its surroundings. The outdated and disjointed infrastructure became a distant memory as the new terminal building assumed its rightful place, serving as a beacon of compliance with international aviation regulations and ushering in a new era of passenger satisfaction.

Envisioned to cater to the demands of tomorrow, the minds behind this project meticulously crafted a space that offered flexibility for future expansions. Passengers were captivated by the grandeur of the new terminal building, boasting a total floor area of approximately 1,700sqm, complemented by an additional 5,100sqm of external covered areas, building services compound, public circulation, and car parking. It was an architectural marvel that blended seamlessly with its surroundings, beckoning travelers to embark on an extraordinary voyage of comfort and convenience.

Wafi Golpu Airstrip Development

MOROBE PROVINCE, PNG

Responsibilities

Aviation | Civil



Kramer Asia Pacific, renowned for its expertise in engineering and design, embarked on an exciting venture in collaboration with WGJV to undertake a captivating concept design study. The study focused on a proposed airstrip adjacent to the world-class Wafi Golpu copper mine, set to make waves in the industry.

Kramer Asia Pacific forged a close partnership with the esteemed PNG National Airports Corporation. Together, we delved into the intricacies of operational requirements, aiming to craft a runway strip tailored to perfection for the remarkable DHC 6 Twin Otter aircraft.

Through meticulous attention to detail, the study encompassed elements of civil engineering, pavement design, and comprehensive documentation. The result was an astonishingly accurate high-level cost estimate, empowering WGJV with the knowledge to make informed decisions and steer the project's future. Positioned as a temporary measure, this airstrip was strategically designed to revolutionize mine access during the initial setup stage.

Eua (Kaufana) Airport Runway Upgrade

EUA ISLAND, KINGDOM OF TONGA

Responsibilities

Project Management | Geotechnical Investigation | Surveying | Aviation | Civil



Kramer Asia Pacific successfully completed an airport upgrading project on Eua Island, Tonga. The project was commissioned by the Tonga Airport Authority and aimed to upgrade the Kaufana Airport to meet the International Civil Aviation Organisation (ICAO) and New Zealand Civil Aviation (NZCA) standards for all-weather operations.

In collaboration with the Tonga Airport Authority, Kramer Asia Pacific conducted pavement investigations to determine the bearing capacity of the existing and proposed new extensions, ensuring the airport met the necessary standards. The project was funded by the Government of New Zealand, demonstrating New Zealand's commitment to assisting Tonga in developing its tourism sector.

Kramer Asia Pacific delivered a comprehensive report based on the ICAO and NZCA standards, providing a detailed plan for the proposed upgrading works. The team utilized their engineering and design expertise to prepare the proposed upgrading work and reporting, adhering to the necessary standards and regulations.

The completion of this project showcases Kramer Asia Pacific's commitment to delivering exceptional outcomes and highlights their ability to collaborate with clients and stakeholders to achieve successful results.

Provincial Airport Upgrades

MULTIPLE LOCATIONS, PNG

Responsibilities

Project Management | Construction Supervision | Aviation | Civil | Structural | Building Services



Kramer Asia Pacific played a vital role in the upgrading of nine provincial airports in Papua New Guinea under Tranche 3 of the Civil Aviation Development Investment Program. Acting as a key partner, Kramer Asia Pacific supported the National Airports Corporation in executing the project, which was facilitated by the Asian Development Bank.

The project involved comprehensive improvements to the selected airports, including Wapenamanda, Madang, Mendi, Kavieng, Vanimo, Wewak, Momote, Mt Hagen, and Tari. Kramer Asia Pacific successfully delivered a range of crucial upgrades, such as widening and strengthening existing runways and aprons, constructing new bitumen-sealed taxiways and aprons, enhancing aeronautical ground lights, and establishing new passenger terminals, administrative buildings, and utilities.

By leveraging our expertise in engineering and design, Kramer Asia Pacific contributed to the transformation of these airports into fully functional domestic aviation hubs. The upgraded infrastructure will facilitate enhanced connectivity and transportation options across Papua New Guinea, promoting economic development and improving the overall travel experience.

FHL Tower Commercial Building

WAIGANI, PNG

Responsibilities
Building Services | Hydraulic | Mechanical | Electrical |
Fire



Kramer Asia Pacific proudly presents the FHL Commercial Tower, an 18-story “Green Building” that has revolutionized Suva’s Business District. This architectural masterpiece combines commercial spaces, offices, and a remarkable top-floor function hall. Our project prioritized Ecologically Sustainable Development, striving for minimal environmental impact, cost savings, and healthier environments. From inception to deconstruction, we meticulously considered every aspect of the building’s lifecycle, earning us the esteemed title of a true “Green Building.”

Our engineering services excelled in providing superior indoor air quality, a meticulously sealed building envelope, and energy-efficient controls through our state-of-the-art Building Management System. Water efficiency took center stage in our hydraulic services, reducing consumption while maintaining operational efficiency. Our fire engineering services integrated sustainable materials, effective asset management, and energy-efficient modes for seamless fire protection.

To conserve energy, our electrical engineering services harmonized natural daylight and sensor lighting, optimizing both aesthetics and efficiency. Advanced power energy meters monitored electrical usage, while our intelligent BMS optimized all electrical systems. The FHL Commercial Tower stands as an architectural marvel, showcasing our unwavering commitment to sustainability.

Tisa Rua Multi-Storey Development

WAIGANI, PNG

Responsibilities
Project Management | Contract Administration | Design
Management | Civil | Structural | Building Services |
Hydraulic | Mechanical | Electrical | Fire



Kramer Asia Pacific was honored to be selected by TSL to provide comprehensive professional services for an impressive ten-storey development known as Tisa Rua. The development comprises a mixed-use podium and tower, featuring retail and restaurant spaces on the Ground Floor and Level 1. From Levels 2 to 8, the tower offers commercial office spaces, along with three luxurious residential penthouse apartments. Drawing inspiration from the Kairuku Hiri stilt house, the architectural design of Tisa Rua incorporates elevated podiums, vertical shading fins, and diagonal bracing on the southern elevation, reflecting the cultural heritage of the Port Moresby area.

Emphasizing energy efficiency and environmentally sustainable design principles, Kramer Asia Pacific ensured that the project aligns with modern standards of eco-friendliness. With a ground floor area of 1,600sqm, a tower floor area of 5,400sqm, and a total gross floor area of 7,500sqm, the development offers high-quality spaces appealing to retail, commercial, and residential tenants.

This landmark development reflects the cultural heritage of Port Moresby while meeting TSL’s evolving needs. Kramer Asia Pacific’s expertise contributed to the creation of this modern and eco-friendly project.

Westpac Bank Properties Repair

MORobe PROVINCE, PNG

Responsibilities
Project Management | Contract Administration |
Construction Supervision | Scoping Assessments |
Quantity Surveying | Civil | Structural | Building Services



Kramer Asia Pacific was thrilled to take on the challenge of restoring the Westpac Bank Cooperation’s residential apartments to their former glory. The project was no small feat, involving remedial works at three different sites, including the Ela Hanua properties, Lawes Road Properties, and Lakosi Place Properties.

Our team dove headfirst into the project with a passion for identifying the full scope of repairs and maintenance needed to breathe new life into the properties. We conducted thorough building condition inspections alongside Westpac to determine the extent of repairs and maintenance needed for each of their building properties. With a clear understanding of the necessary remedial works, we moved on to the scoping engineering services phase. This included creating detailed schematics, drawings, work methodologies, and relevant specifications to guide the project’s next steps. Tendering and evaluation of the most suitable contracting methods for the project quickly followed.

Our team assumed full project management responsibilities, overseeing the construction phase and supervising the Contractor’s work. Our close collaboration with Westpac ensured a seamless execution of the remedial works, resulting in the remarkable transformation of these previously worn-out residential properties.

Ela Motors Lae Show Room

MORobe PROVINCE, PNG

Responsibilities
Civil | Structural | Building Services



Kramer Asia Pacific partnered with Ela Motors to provide Building Services (Mechanical, Electrical, and Hydraulics) design and inspection services for the new Ela Motors Showroom in Lae. The project encompassed the construction of a showroom, parts store, workshop area and wash bay.

Working closely with Ela Motors, Kramer Asia Pacific prioritized an innovative and fit-for-purpose design approach to meet the project budget requirements. The team delivered environmentally sustainable designs that incorporated thermal efficient construction techniques, resulting in reduced long-term operational costs. With a focus on compliance, Kramer Asia Pacific meticulously documented the building services design to ensure adherence to AS/NZS Standards. They conducted thorough inspections of the structural and civil engineering aspects, ensuring installations met the required standards and industry best practices.

The collaboration between Kramer Asia Pacific and Ela Motors resulted in the successful delivery of a state-of-the-art showroom that not only met the highest industry standards but also demonstrated functionality, cost-effectiveness, and environmental sustainability.

Angau Memorial Hospital

MOROBE PROVINCE, PNG

Responsibilities

Civil | Structural | Building Services | Hydraulic | Mechanical | Electrical | Fire



Kramer Asia Pacific was proud to be a part of the historic Angau Hospital redevelopment, which represented the largest infrastructure project delivered jointly by Australia and Papua New Guinea since the country gained independence. The recently opened TB Ward was a testament to the success of our approach, which combined international standard healthcare design with a local focus on culture, labor, materials, and climate.

We recognized that local communities had unique needs and challenges that had to be considered when designing and constructing healthcare facilities. Therefore, our team at Kramer Asia Pacific worked closely with local stakeholders and medical professionals to ensure that the redevelopment of Angau Hospital would deliver the highest standards of care while remaining sensitive to the needs of the local population.

The redevelopment project provided both acute and non-acute services, including a new Emergency department, imaging, operating theatre and intensive care unit, a birthing unit, pathology, various wards (special care nursery, pediatrics, medical/surgical, tuberculosis), and various outpatient clinics. Our team at Kramer Asia Pacific provided a comprehensive suite of engineering design and documentation services to ensure the successful delivery of this essential healthcare facility.

New Ba Hospital

BA, FIJI

Responsibilities

CAD Services | Civil | Structural | Building Services | Hydraulic | Mechanical | Electrical | Fire



Kramer Asia Pacific was pleased to have been awarded the contract for the complete engineering services of design and documentation for the New Ba Hospital building project. Our team of experienced engineers provided comprehensive engineering services across all disciplines, including civil, structural, and building services.

Our engineering design and documentation services covered all aspects of the hospital building project, from initial conceptualization to final construction documentation. Our focus was on creating a facility that was functional, efficient, and sustainable, with a design that was both aesthetically pleasing and in line with the client's vision.

In addition to our engineering design services, we also provided full construction administration for both civil and structural engineering and building services. Our team worked closely with the construction contractor to ensure that the project was completed to the highest standards of quality, safety, and sustainability. We were proud to be a part of this project, which improved healthcare services for the local community, and we looked forward to working closely with all stakeholders to ensure its success.

Wabag Provincial Hospital

WABAG, PNG

Responsibilities

Project Management | Construction Supervision | Civil | Structural | Building Services | Hydraulic | Mechanical | Electrical



At Kramer Asia Pacific, we were thrilled to be a part of the Enga Provincial Hospital project in Wabag, which brought significant improvements to the delivery of healthcare services in the region. This landmark development comprised a complex of predominantly single, with some two-storey structures, that had been carefully designed to complement the natural topography and interact harmoniously with the extensive landscaping. This essential healthcare facility covered an area of 34 hectares and included a hospital, staff residence, external work, and sewage treatment plant. The hospital consisted of 14 buildings with a total construction area of 20,500 sqm, and the staff residence comprised 25 buildings with a construction area of 10,500 sqm.

As the largest hospital in Enga Province, the new 300-bed hospital was a symbol of progress and development. The complex of buildings had been carefully designed to complement the natural topography, creating a harmonious interaction with the extensive landscaping. The project was funded by the concessional loan of Exim Bank of China, and we were committed to ensuring the successful delivery of this vital project.

National Referral Hospital

HONIARA, SOLOMON ISLANDS

Responsibilities

Project Management | Architectural Services | Civil | Structural | Building Services



Kramer Asia Pacific was the design architect and engineer for the National Referral Hospital's new CT Scanner Building project in Honiara, Solomon Islands. The project, fully funded by the Solomon Island Government at a cost of \$21M Solomon Dollars, aimed to provide a 3D x-ray service for a population of over 800,000 people. This was the first of its kind to be installed within the country, making it a significant milestone for the healthcare industry in the Solomon Islands.

The project included the design of a 400 sqm building to accommodate the CT Scan equipment on the ground floor level and a conference room at a mezzanine floor level. The project was completed under a design and construction approach, and Kramer Asia Pacific collaborated with the builders to ensure a seamless execution.

The project's success was due to the possibility of local contractor capabilities with global engineering expertise to a National project. Kramer Asia Pacific is proud to have been a part of this significant project that will provide essential healthcare services to the people of the Solomon Islands.

NCDC BSP 9 Mile PM

9 MILE, PNG

Responsibilities
Project Management | Site Investigation | Civil | Electrical



The project involved a comprehensive investigation, detailed design, and thorough documentation of the 9 Mile to Pacific Adventist University (PAU) Road, 9 Mile to Laloki Bridge, and Gerehu Drive to Nigibata Drive. The total road length that required design covered 17.13km, which was divided into three parts: 10.5km from 9 Mile to PAU, 3.63km from 9 Mile to Laloki Bridge, and 3km from Gerehu Drive to Nigibata Drive.

The road design consisted of four lanes separated by a median, providing ample space for the smooth flow of traffic. The median served as a barrier between the two directions of traffic, preventing head-on collisions and reducing the risk of accidents. Additionally, the four lanes allowed for efficient traffic management, particularly during peak hours when traffic volume is high.

The current road concept included six major intersections in the form of roundabouts. During the project, these intersections were assessed in greater detail during three traffic impact assessments to determine their suitability in terms of required footprint and traffic capacity. The assessments also evaluated the potential impacts on the surrounding environment and the local community. Based on the assessments, there was a possibility that these intersections may be upgraded to signalized intersections to enhance traffic flow and safety.

Fagaloa Bay Road Reconstruction

EASTERN UPOLU, SAMOA

Responsibilities
Project Management | Construction Supervision



Kramer Asia Pacific was responsible for the Contract Supervision and Administration of the Fagaloa Bay Road Reconstruction Contract for the entire seven month construction period. This project was located in a highly mountainous area with frequent and heavy rainfall, which presented significant challenges during the construction process.

The project involved the complete reconstruction of 3.9km of road, starting from subgrade level. The road was widened from 4m to 6m and a 4m wide two-coat chip seal surface was applied, providing a safer and more durable road for the local community. Additionally, extensive road widening and re-battering of banks was undertaken to ensure that the road could withstand heavy rainfall events and remain stable over time.

Our team was responsible for overseeing the construction works and ensuring that they were completed in accordance with the contract specifications and within the specified time and budget. Despite the challenges presented by the terrain and weather, we were able to successfully manage the project to completion, delivering a high-quality road that will provide safe and reliable transportation for the local community for years to come.

Baime Hydropower Project

MOROBE PROVINCE, PNG

Responsibilities
Project Management | Civil | Structural | Hydro-
Mechanical



Kramer Asia Pacific played a vital role in Papua New Guinea's Baime Hydropower Project (BHPP), contributing to its success. Our responsibilities encompassed design management, contract administration, and superintending services. The BHPP involved diverting flows from the Baime River to generate electricity, resulting in an impressive 11.6 MW increase in power capacity.

As construction project managers, we ensured contractors complied with contractual requirements and facilitated regulatory approvals. Our technical support aided the client throughout the project. Monitoring construction activities, materials, safety systems, and environmental management ensured adherence to standards. We also excelled in contract administration, quality assurance, and risk management.

Throughout the project, we conducted thorough site inspections, reviewed documentation, and oversaw the commissioning phase. Our approval of methodologies, management plans, and testing procedures played a vital role. We skillfully managed cost control and contract administration, ensuring successful project outcomes. Our contribution to the BHPP was instrumental in its implementation and the growth of hydro power capacity in the region.

Tanna Atmospheric Water Generators

TANNA, VANUATU

Responsibilities
Civil | Structural



Kramer Asia Pacific played a crucial role in addressing the water crisis on Tanna Island in Vanuatu. After Cyclone Pam destroyed water infrastructure and contaminated rainwater, we were approached by Source (formerly Zero Mass Water) through an Asian Development Bank program to develop a solution.

Kramer Asia Pacific provided logistics advice and planning support, ensuring the smooth transport of materials to the island. We conducted site due diligence and investigations, including geotechnical assessments. Civil and structural design expertise was utilized to develop foundation and slab designs tailored to the limited resources and machinery availability on the island. Our team also provided structural certification for the foundation systems based on the National Building Code of Vanuatu and the limits of Source's units.

The project resulted in the installation of a hydropanel array at Petros Primary School, providing up to 540,000 liters of safe drinking water over its lifetime. The successful implementation of this pilot project received appreciation from the Vanuatu government for filling a critical gap in water provision and potential extension beyond the education sector.

How Development Partners Can Help



1. Simplify procurement processes



2. Require meaningful local partnerships



3. Facilitate access to finance for Pacific firms



4. Support long-term capacity development



5. Reward sustainability and innovation in bids



6. Engage Early

Aligning with PQI Principles

Local Content & Value for Money:

- Prioritise local labour, materials, and knowledge.
- Achieve long-term value, not just lowest cost.

Climate Resilience & Inclusivity:

- Design with traditional knowledge and local context.
- Ensure diverse participation, especially of women and youth.

Private Sector Investment:

- Encourage private sector-led development through clear policy frameworks and PPPs.

The Way Forward

- “Infrastructure built for and by the Pacific.”
- From projects delivered to the Pacific... to infrastructure built by the Pacific.
- Capacity over compliance.
- Empowerment over outsourcing.
- Value Pacific expertise and innovation
- Empower local firms to deliver sustainable impact

Kramer Asia Pacific remains committed to purposeful design, innovation, and collaboration—ensuring infrastructure initiatives achieve growth and deliver enduring progress for Pacific communities.