



# Pacific Regional Infrastructure Facility (PRIF)

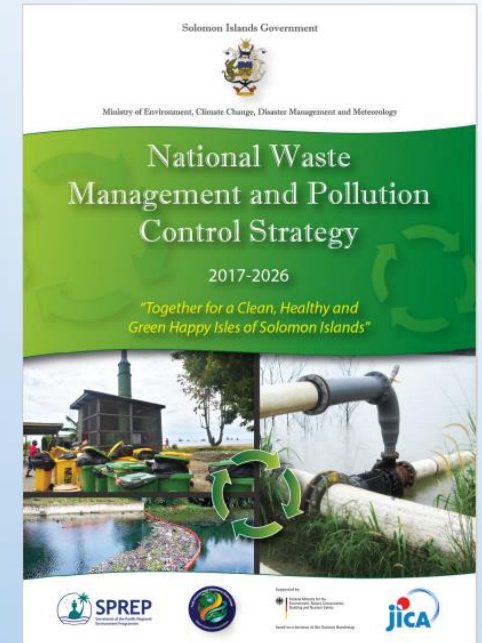
## Roadmap for a Recycling Network in the Pacific- Solomon Islands Experience

**Presenter :** Wendy Beti  
Chief Environment Officer, Environment & Conservation Division



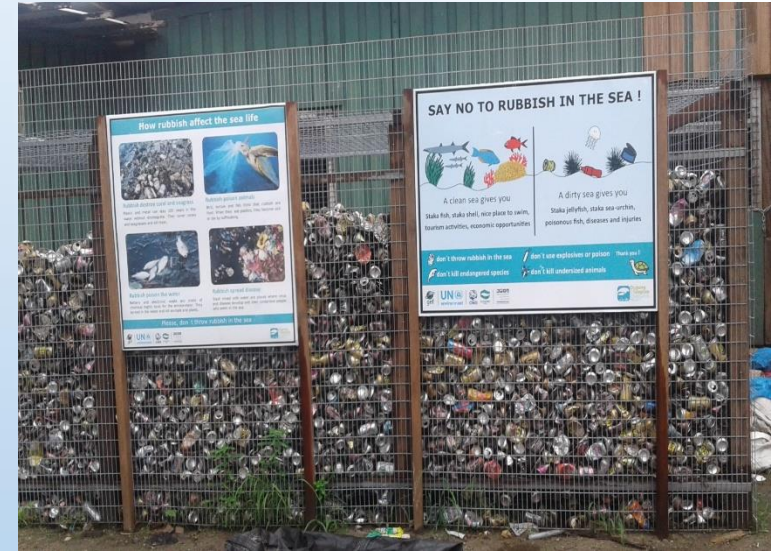
# Solid Waste Management in Solomon Islands

- ❑ Solid waste management is still at a developing stage
- ❑ All solid wastes are imported into the country
- ❑ Most of the provincial centers including capital city of Honiara lacks basic infrastructure to manage waste and control pollution e.g. waste compactor trucks, sanitary landfill, etc
- ❑ Private Sector industries /companies are implementing sound waste management practices whilst there are others are not
- ❑ Existing Legislations & ordinances are weak, not enforced and outdated
- ❑ Illegal dumping, improper disposal and open burning still a common practice that needs to be addressed
- ❑ Recycling and resource recovery still at a small scale with a major focus on aluminum can collection, only one local company is going into ULABs recycling collection and one local into pyrolysis system
- ❑ National Waste Management & Pollution Control Strategy 2017-2026 is comprehensive



# Progress of Recycling in SI

- ❑ Honiara is the main hub for most recycling collection in the country
- ❑ Smaller scale recycling initiatives in few other provincial centers ( e.g. Gizo, Auki, Tulagi, etc.)
- ❑ Launching & Establishment of the First Solomon Islands Recycling & Waste Management Association
- ❑ Main high value item recycled includes: ferrous & non-ferrous ( mostly aluminum cans, scrap metals, brass, etc)
- ❑ There are plans in the Pacific Games 2023 for waste segregation at all games venues including villages



# Challenges

- Geographical distribution of islands
- High Shipping costs
- There is no recycling of low value items ( PET, Cardboards, etc)
- Lack of recycling facility in the SI

# Opportunities

- Support from Development partners & Projects to introduce economic instruments such as the Advanced Recovery Fee Deposit /CDL system to promote recycling
- Potential for establishment of a Regional Recycling Hub to enhance recycling in the Pacific Region

